

# Brazilian Observatory of Climate and Health



**Initiative of:** Oswaldo Cruz Foundation (FIOCRUZ)\*

**Partners:** Department of Environmental Health and Worker's Health Surveillance, Institute of Communication and Scientific and Technological Information in Health, National School of Public Health Sérgio Arouca, National Institute of Space Research, National Water Agency of Brazil, Brazilian Institute of Geography and Statistics, Health Informatics Department, National Institute of Meteorology

**Year:** 2009 - present

**Sector:** Health

**Scale:** National

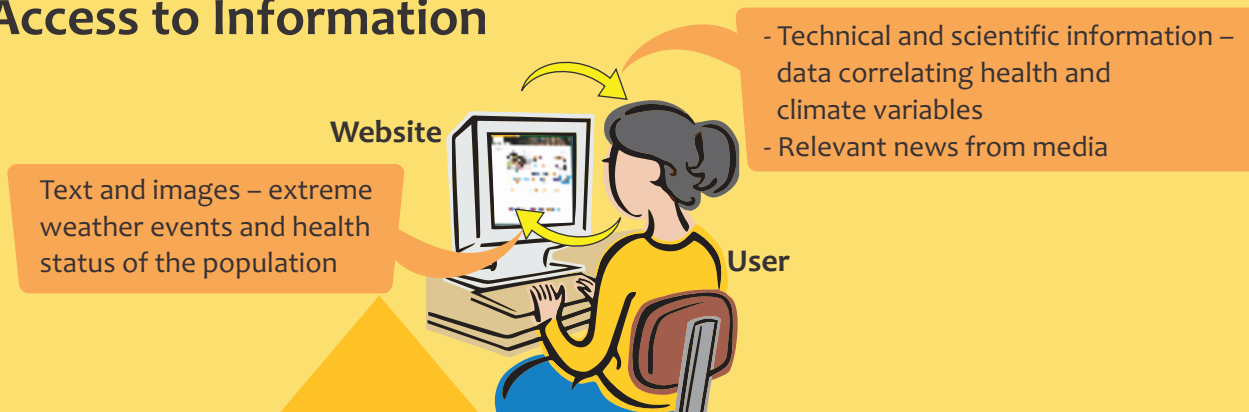
The aim of this project is to monitor the health related effects of climate change, organize and disseminate relevant information and promote collaborative research and action. A website has been developed as a primary tool to provide data collected from different institutes as well as from users who can feed in information. Another important research component involves monitoring and analysing climate variables and related diseases at sentinel sites distributed in different biomes in the country to produce localized results. The validated results and parameters can help with modelling the dynamics of diseases at the national level to predict future trends.

The outcome of a study conducted at one of the sentinel sites- Manaus, located at the confluence of three large rivers, which looked at the correlation between extreme climate events and water-borne diseases concluded that the water level of the rivers affects the number of cases of leptospirosis. This is because low cost traditional houses are built on stilts at the river and flood and drought affects the river water level thus disrupting the sanitation system. Consequently, one of the adaptation measures involves the establishment of minimum altitude (above the observed peak water levels in the river) for building residences and sanitation systems.



\* Website: <http://www.climasaude.iciet.fiocruz.br/>

## Access to Information



## Data



**Environmental**  
Land coverage, land use, forest fire



**Sociodemographic**  
Population, migration, vulnerability



**Climate**  
Precipitation, temperature



**Health**  
Disease notification, hospitalization, mortality, time series

## Collaboration



- Government Organization
- Non-Governmental Organization
- Civil Society
- Academic Institutions
- Researchers
- Administrators
- Health Care Professionals
- Citizens

### Thematic Workshops (2009 – 2012)

- Identify list of indicators and data sources
- Raise awareness and mobilize researchers

### Sentinel Site Research

- Representing different biomes and related health issues
- Acts as a warning post correlating health condition and environmental changes
- Validate and establish parameters for modeling

## Brazilian Observatory of Climate and Health

Influencing decision makers